



# Company Presentation



**Queensland Exploration Council – Investment Showcase:  
5:30PM, 9 November 2017**

**ASX : GAS**

# General Disclaimer

This document has been prepared by **State Gas Limited** (“the Company” or “State Gas”) to provide prospective investors in State Gas Limited with an update on the Company and its operations. This document is based on information and material collated, prepared by and supplied to the Company and from publicly available information. The Company has not independently verified the reliability, completeness or accuracy of certain information and materials are reliable, complete or accurate.

This presentation does not constitute financial product advice and does not and will not form any part of any contract for the acquisition of shares in State Gas.

This presentation, including the information contained in this disclaimer is not a prospectus, disclosure document, product disclosure statement or other offering document under Australian law or under any other law. It is for information purposes only and does not constitute an offer, invitation or recommendation to subscribe for or purchase any security and neither the presentation, disclaimer nor anything contained in them forms the basis of any contract or commitment. This presentation does not take into account your individual investment objectives, financial situation or particular needs. You must not act on the basis of any matter contained in this presentation, but must make your own assessment of the Company.

No representation, express or implied, is made as to the fairness, accuracy, completeness or correctness of information contained in this presentation, including the accuracy, likelihood of achievement or reasonableness of any forecast, prospects, returns or statements in relation to future matters contained in the presentation (“forward-looking statements”). Such forward-looking statements are by their nature subject to significant uncertainties and contingencies and are based on a number of estimates and assumptions that are subject to change (and in many cases are outside the control of State Gas Limited and its directors) which may cause the actual results or performance of State Gas Limited to be materially different from any future results or performance expressed or implied by such forward-looking statements.

To the maximum extent permitted by law, none of State Gas or its related corporations, directors, employees or agents, nor any other person, accepts any liability, including, without limitation, any liability arising from fault or negligence, for any loss arising from the use of this presentation or its contents or otherwise arising in connection with it.

# GAS: Highlights

ADVANCED PROJECT	<b>Granted Petroleum Lease (PL 231)</b> , with Pipeline Survey Licence Application (PSL 2028)
SHALLOW CONVENTIONAL GAS PROJECT	<b>conventional gas</b> in Central Queensland, first discovered in the 1950s
GAS FLOWS	15 historical wells drilled since 1950s
SHALLOW GAS - PRIMARY TARGET	Cattle Creek Formation - <b>150m to shallow overpressured gas target</b> (refer September 2017 Prospectus for historical target)
LARGE SECONDARY TARGET	Reid's Dome Beds - <b>1,000m+ to large gas target</b> (refer September 2017 Prospectus for historical targets)
PIPELINE – EAST COAST NETWORK	45km NE to Rolleston / <b>Queensland Gas Pipeline</b> 50km SW to <b>Queensland Gas Pipeline</b>
OPERATORSHIP	State Gas is <b>Operator</b> with <b>60% of PL 231</b> - simplified JV Feb 2017
EXPERIENCED	<b>Strong, active Board</b> – strong technical and commercial experience

# Discovered in 1955



Gas discovered in 1955 at a depth of 137 meters (Cattle Creek Formation) when drilling for oil, flowing gas at 0.55 mmcf/d – AOE-1 well



# Last Drilled in 2006



Primero-1 Well, drilled in 2006, with a flow rate of 2.8 mmcf/d (Cattle Creek Formation) reported from this well

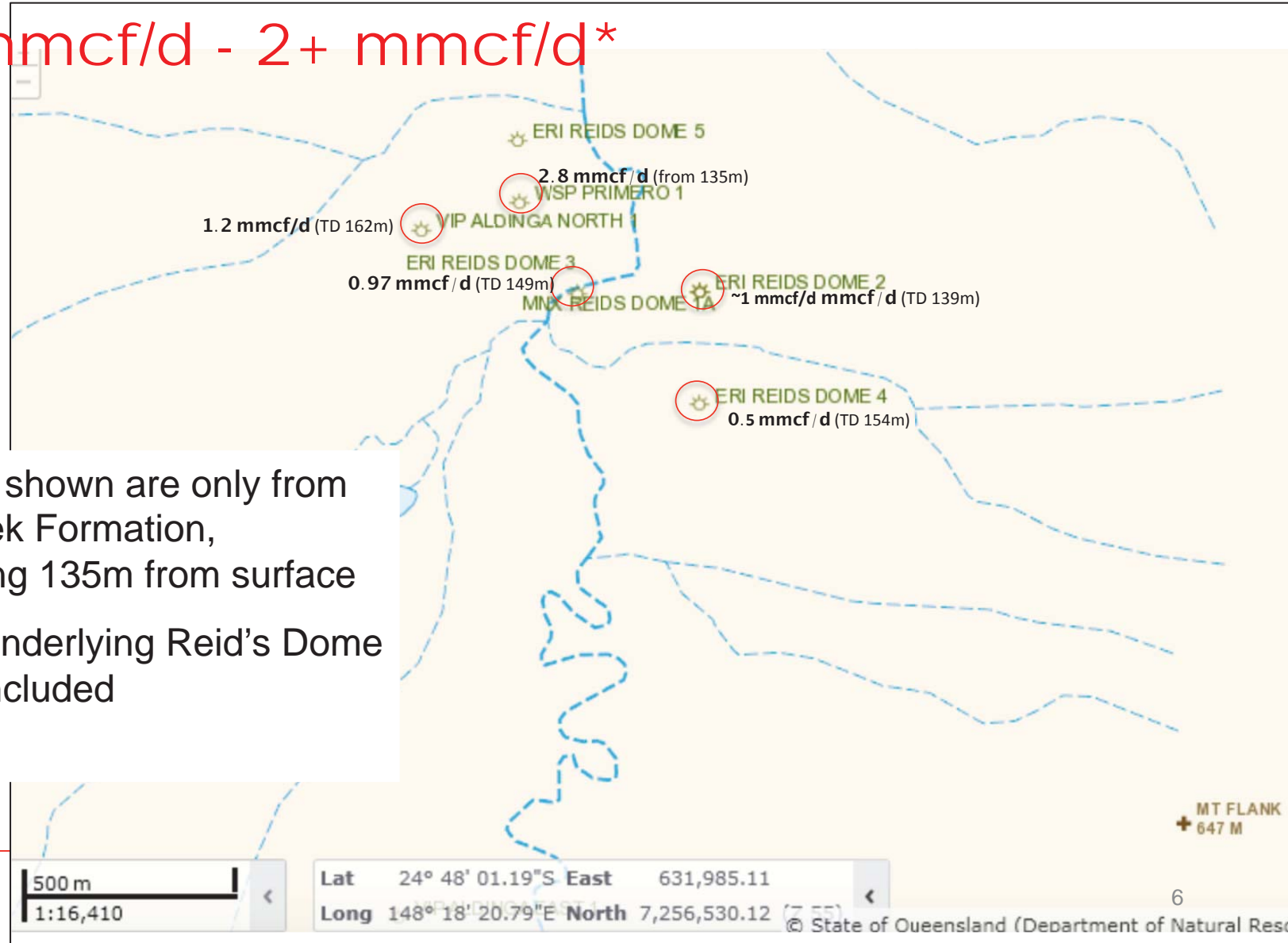
View video of gas flowing at Primero-1 in June 2017 and other infrastructure at PL 231:

<https://www.youtube.com/watch?v=GiozYJ9BtoU#action=share>



# Historical Flow Rates:

0.5 mmcf/d - 2+ mmcf/d\*



\*Gas flows shown are only from Cattle Creek Formation, commencing 135m from surface  
Gas from underlying Reid's Dome Beds not included

# Eastern Gas Market Update

## **East coast gas market dynamics are going through a fundamental shift**

- The market is resigning itself to the fact that recent actions to restrict LNG exports and divert gas into the domestic market will not have a significant impact on bringing down east coast gas prices.

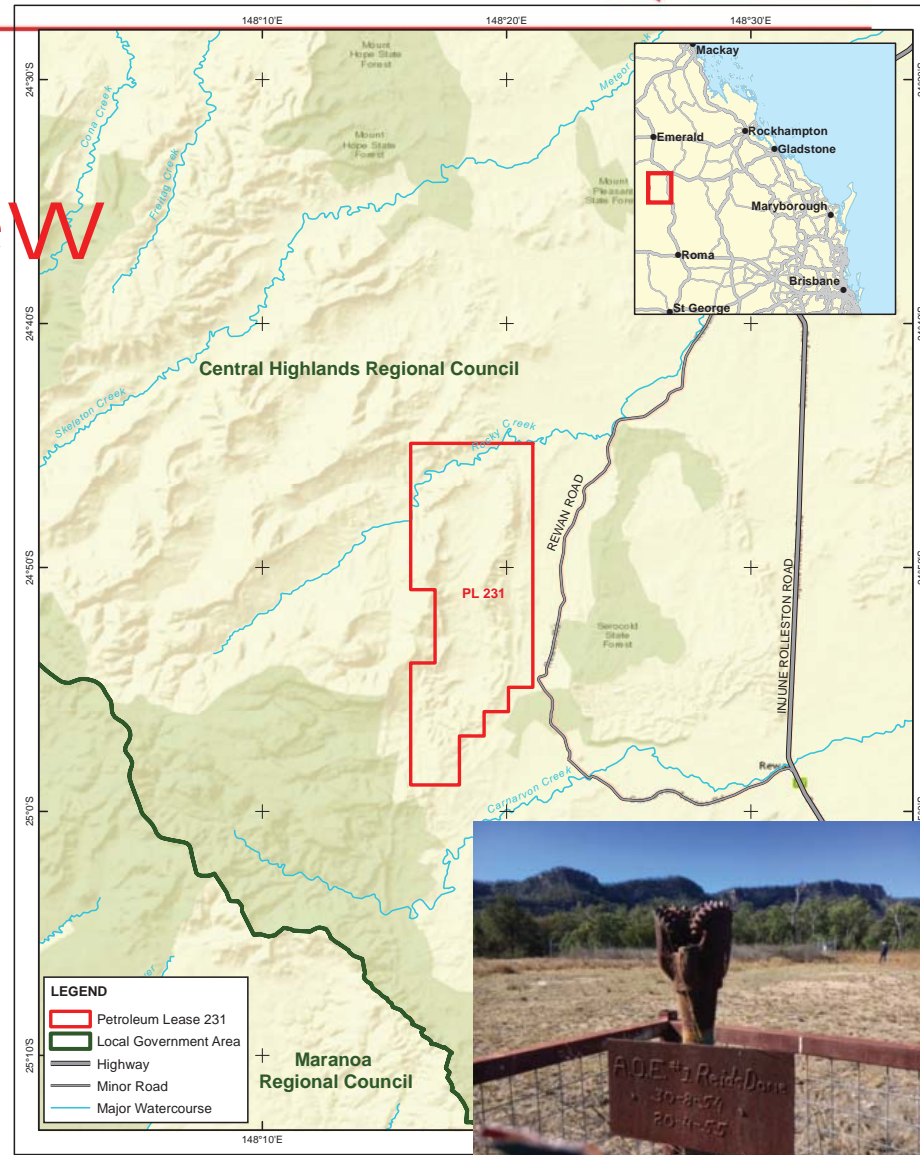
## **Reliance on Qld LNG to continue, LNG imports not cheap but may be needed**

- The east coast will remain reliant on diverted Qld LNG supplies for at least the next 5 years (and most likely longer), as alternate gas supplies of any size are still a few years away.
- Development cost & distance of new supply from markets means that development is unlikely to exert material downward pressure on east coast gas prices any time soon.
- There is room for LNG imports, but landed price is a key challenge.
- Gas prices in the \$8-10/GJ (ex-field) range expected for the foreseeable future.

*Source: UBS, 19 October 2017, “The next wave of east coast gas supply”*

# Cattle Creek Project Overview

- Conventional gas 50km South West of Rolleston
- 181sq km covering a classic north-south dome structure
- 50km from Queensland Gas Pipeline network
- Low drilling and extraction costs (shallow overpressured conventional gas reservoir)

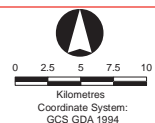


**LEGEND**

- Petroleum Lease 231
- Local Government Area
- Highway
- Minor Road
- Major Watercourse

**NOTES**  
 Terminology: Dept of Mines & Energy, Aug 2017  
 Base data: Geoscience Australia, Geocade V3

**DISCLAIMER**  
 In preparing this map, RLMS have endeavoured to ensure that the data and information are as accurate and reliable as possible. However RLMS cannot accept liability for any decisions or actions of whatever kind or nature based on this study. RLMS expressly disclaims any loss or damage that may arise therefrom.



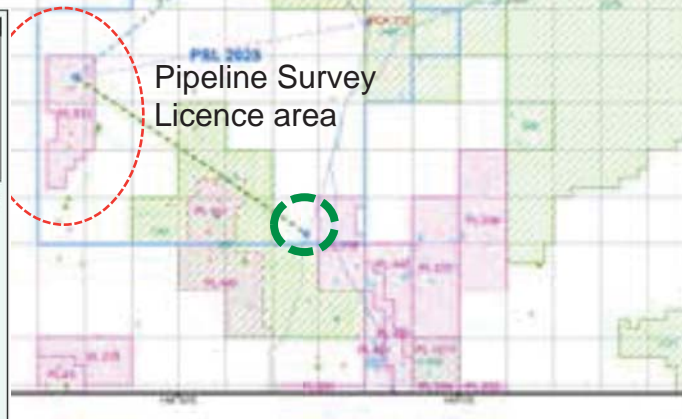
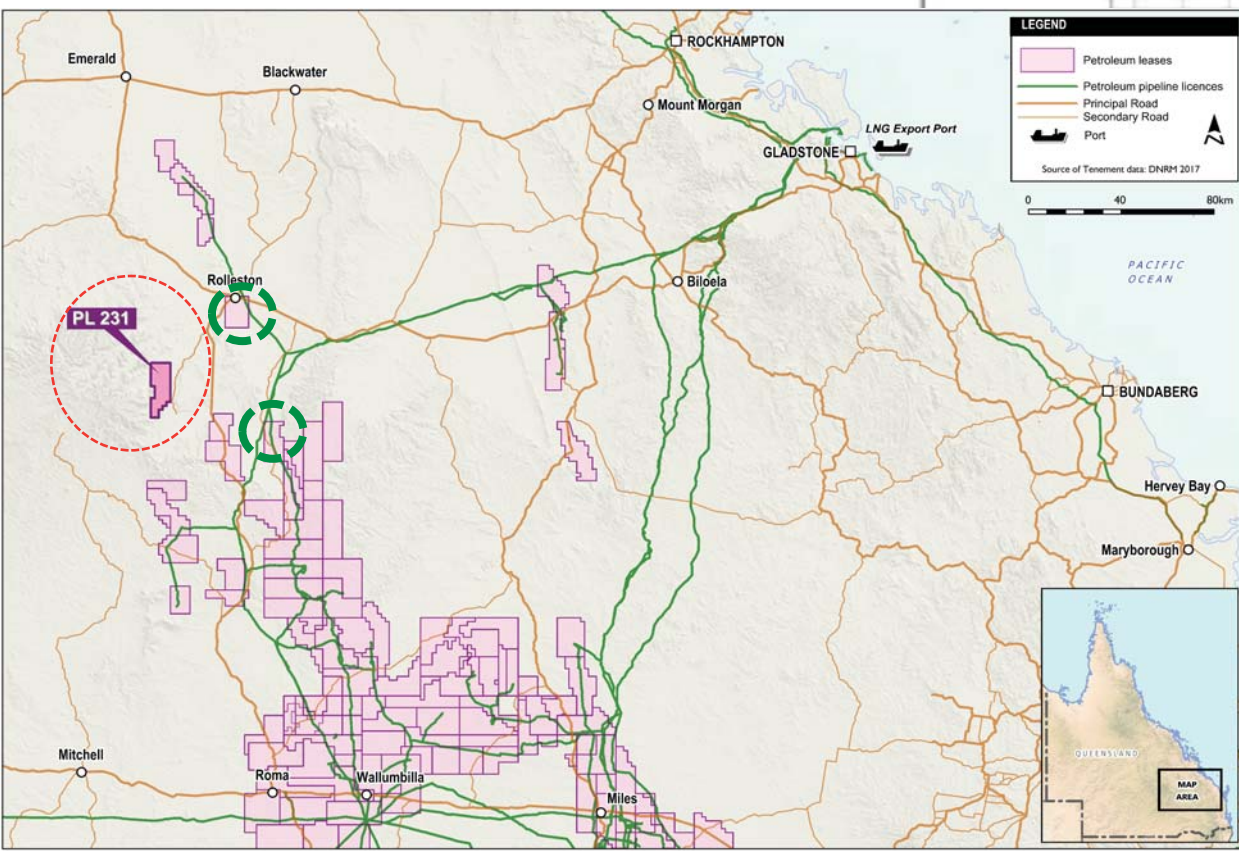
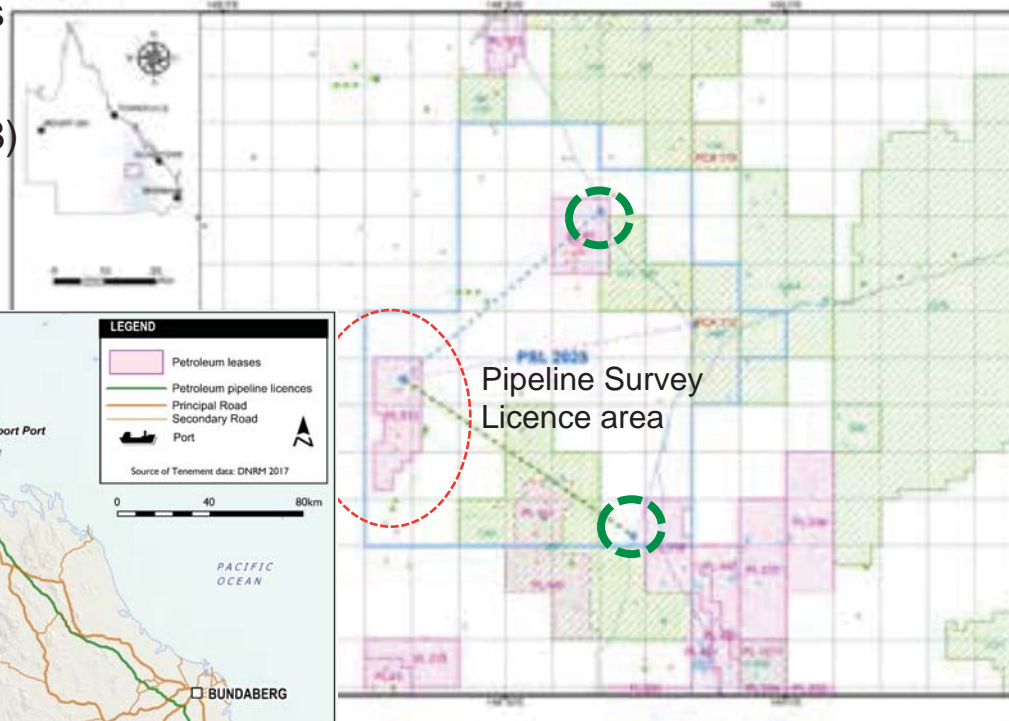
CLIENT **STATE GAS LIMITED**  
 PROJECT **PL 231 CATTLE CREEK/REIDS DOME PROJECT**  
 FIGURE 1 **PL231 LOCALITY**  
 DATE **AUGUST 2017**



# Infrastructure

- Queensland Gas Pipeline network connections options to the north-east and south-east
- Pipeline Survey Licence Application (PSL 2028) lodged in August 2017
- Gas processing at Rolleston and Arcadia

PSL 2028



# Primary and Secondary Targets



- **Primary focus (current): Cattle Creek Formation**

- Shallow overpressured gas target from 135m in the sandstone Cattle Creek Formation
- Overpressured sediments generally exhibit favourable porosity, often make attractive hydrocarbon reservoirs and are therefore of important economic interest
- Low drilling and production costs – shallow conventional gas
- Independent Expert view (refer IPO Prospectus, September 2017):

*“Potential to produce commercial quantities of conventional gas from the Cattle Creek Formation”*

- **Secondary opportunity (future): Reid’s Dome Beds underlying the Cattle Creek Formation**

- Gas encountered in the Reid’s Dome beds from 1,000+ metres
- Reid’s Dome Beds at least 2,770 metres thick
- Independent Expert view (refer IPO Prospectus, September 2017):

*“Potential exists within this formation to contain substantial volumes of commercial oil and gas”*

# Work Program



- **Preliminary work (2017 – early 2018)**
  - Flow testing historical wells, reprocessing existing seismic data
  - Discussions with potential customers and majors needing additional gas
  - Investigating options to optimise initial drilling, gross payzone yield, and pipeline route
- **Two new step-out wells (early 2018)**
  - Drilling and testing of two step-out wells from Primero-1
  - Complete as development wells (if feasible)
- **Pipeline planning and licencing (2017-18)**
- **Two development wells (late 2018)**
  - Drilling, testing and completion of two additional step-out development wells

# Board and Management



**Tony Bellas** Chairman

- Chairman of ERM Power, NOVONIX Limited, Corporate Travel Management, Shine, former CEO of Ergon Energy and CS Energy)



**Ian Paton** Non-executive Technical Director

- Petroleum geophysicist and engineer, instrumental in many oil and gas discoveries, former Exploration and Development Manager for SANTOS, senior technical and management roles in exploration and development with Conoco, Coogee Resources, New Standard Energy



**Greg Baynton** Executive Director

- Director of NOVONIX Limited, SUPERLOOP Limited and Orbit Capital



**Rob Towner** Non-executive Director

- Managing Director of Triangle Energy (Global) Limited, non-executive director of Botanix Pharmaceuticals Limited



**Suzanne Yeates** Company Secretary and CFO

- Chartered Accountant working with clients for over 20 years as CFO and Company Secretary for public and private companies



# GAS: Capital Structure

Shareholder	Escrow Restriction <sup>^</sup>	On Admission (m shares)	
Triangle Energy	Escrow to October 2019	47.8	35.5%
Directors <sup>#</sup>	Escrow to October 2019	31.1	23.1%
Other seed investors	Escrow to June 2018	29.7	22.0%
IPO investors	Nil	26.2	19.4%
<b>TOTAL</b>	<b>100%</b>	<b>134.8</b>	<b>100%</b>

<sup>#</sup> Excludes 2,000,000 options over unissued Shares to be granted to Mr Paton (see section 10.4 of Prospectus)

<sup>^</sup> Approximately 107.4 million Shares (80% of Shares on issue on admission) in the issued capital of State Gas will be subject to restriction agreements for periods from June 2018 to October 2019 (see section 8.4)

# Conclusion

The east coast gas crisis represents a long-term problem:

***“We see gas prices in the \$8-10/GJ (ex-field) range for the foreseeable future.”***

***UBS, 19 October 2017, “The next wave of east coast gas supply”***

**Greg Baynton**  
Executive Director  
State Gas Limited

GPO Box 525  
Brisbane QLD 4001  
AUSTRALIA

m: 0414 970 566  
greg@state-gas.com

**Tony Bellas**  
Chairman  
State Gas Limited

GPO Box 525  
Brisbane QLD 4001  
AUSTRALIA

M: 0412 244 385  
tony@state-gas.com